



# A JETPACK FOR DEVELOPERS

WaveMaker is a Java-based platform for creating high-performance, enterprise-grade Angular and React Native mobile apps. Devs can jump from design to code in an instant with AutoCode and get pixel-perfect, functional apps from their Figma UI. With an open-standards model, zero devops set-up and baked-in security guardrails, WaveMaker provides an ideal workflow for the modern developer.



TypeScript



Spring



Bootstrap



Angular JS



React Native



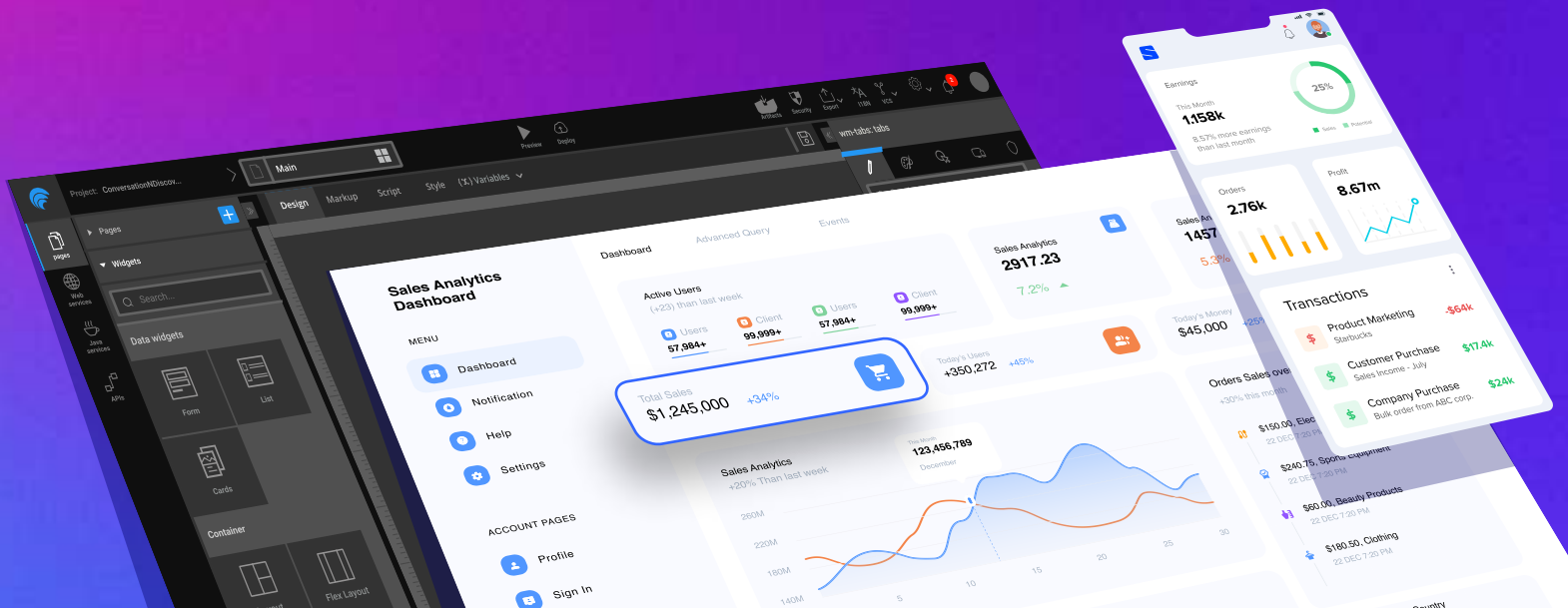
Open AI



Figma



Cloud Native



# TABLE OF CONTENTS

3	AN INTEGRATED SYSTEM - AUTOCODE + WAVEMAKER UI KIT + COPILOT
6	WAVEMAKER STUDIO FOR REACT NATIVE
8	WAVE XD - BUILD 5G APPS, FAST
6	PREFABS
11	DEVELOPMENT LIFECYCLE
12	USE CASES
13	INDUSTRIES AND SOLUTIONS
13	CUSTOMER SUCCESS STORIES

# GO FROM DESIGN TO PRODUCTION-READY APPS IN WARP SPEED



WaveMaker AutoCode is an AI-powered WaveMaker plugin crafted for Figma, enabling product teams to jump from design to code in an instant. AutoCode produces a fully-functional app, with pixel-perfect translation of design elements, app navigations, and intended interactions.

AutoCode is designed to work with the M3 Design system. Development teams can import their own design systems or use Wavemaker's design system that provides ready-to-use components, themes, and tokens to build beautiful web and mobile user interfaces. It's called the WaveMaker UI Kit.

## FEATURES



### Automatic component detection

Autocode detects components used in your Figma design and maps them to corresponding widgets in WaveMaker.



### Prototype app links to working navigations

Designers use prototype in Figma to link pages and overlays, these get translated into page navigations in the generated code.



### Accurate detection of groups

The AI model detects important groups such as Forms (single step and multi step), Lists, Cards and generates corresponding code.



### Material 3 compliance

WaveMaker Widget library fully implements M3 component functionality.



### Figma variable and Modes support

WaveMaker's generated code maps all the design tokens maintained as variables in the Figma UI to JSON files in the form of **Style Dictionary**. Modes (light, dark, high contrast) are also picked up and are available as CSS variables.

## RESOURCES

[Try AutoCode](#)

# BUILD MODERN USER INTERFACES



Fully integrated into WaveMaker Studio, the WaveMaker UI Kit provides an open-source component library implemented in Angular and React Native, alongside a UI Kit for Figma to streamline the design-to-development process. Available in Storybook, developers can explore, test, and implement components in isolation, ensuring every element is optimized for enterprise-grade applications.

Leveraging the AutoCode Figma Plugin, designs crafted in Figma can be seamlessly imported into WaveMaker Studio, transforming them into production-ready applications. Together, the UI Kit and WaveMaker Studio enable faster, smarter, and consistent application delivery.

## FEATURES



### Customizable components

From buttons and forms to navigation bars, every element is designed to be fully responsive and easily adjustable, ensuring consistency across projects.



### Advanced UX guidance

WaveMaker UI Kit provides detailed design principles and interaction patterns, ensuring interfaces are intuitive, accessible, and optimized for seamless user experiences across devices.



### Modern design principles

Create scalable, responsive, and beautiful UI that aligns with enterprise needs and modern user expectations. WaveMaker UI Kit adheres to the latest design standards, inspired by industry leaders like Material Design (Material 3.0).

## RESOURCES

[Try WaveMaker UI Kit](#)

# INTUITIVE TEXT TO BEAUTIFUL CODE



WaveMaker CoPilot is a generative AI-powered assistant that helps you build and refine beautiful web and mobile applications based on WaveMaker UI Kit. Learning from the API developers are using for the project, it generates the most appropriate UI widget template. Together, AutoCode and CoPilot provide acceleration in large-scale projects that need robust architecture, design-to-code accuracy, and easy maintenance of web and mobile applications.

## What can you generate?

From forms with multi-step wizard to charts, from lists to cards, you can produce individual elements or full fledged App UIs with WaveMaker CoPilot. CoPilot is ideal for developers who have ready APIs for building a web app or mobile app, and if you are new to WaveMaker, CoPilot is a perfect launchpad to start using the product.

## How it works?

WaveMaker CoPilot consumes APIs (open API or Swagger), and builds a bottom-up understanding of object structures and interconnections between objects to recommend the best UI widget for a use case.

By consuming APIs (open API or Swagger), it enables developers to create, bind, and edit widgets, offering tailored suggestions. Finally, it generates the code snip that is needed to invoke and bind the data from the APIs.

And if there are no APIs available, WaveMaker CoPilot steps up by creating the APIs you need. Leveraging its generative AI capabilities, CoPilot can define and generate APIs based on the application's requirements and data structures. Once the APIs are ready, it seamlessly integrates them with the appropriate UI components, binding data dynamically to ensure smooth functionality. This provides a fully functional UI connected to robust, auto-generated APIs.

# BUILD NATIVE MOBILE APPS WITH WEB SKILLS, 2X FASTER



WaveMaker Studio for React Native

WaveMaker Studio for React Native provides acceleration for web developers building large-scale enterprise mobile applications on iOS and Android. Jumpstart your web developer team into building mobile apps, with minimal setup and an open-standards environment. No repetitive setup or devops hassles, your team can focus on business requirements and building out the right features for mobile users.

## OUT-OF-THE-BOX CONFIGURATIONS

<b>Enterprise Security &amp; Compliance</b>	Built-in ADA compliance, role-based access, and encrypted communications protect your app at every layer.
<b>Global-Ready Architecture</b>	Native support for i18N and RTL layouts makes your app ready for worldwide deployment, from Spanish to Arabic.
<b>Themed Components</b>	Build consistent experiences with customizable themes that apply across your entire application ecosystem.
<b>Auto-Managed Updates</b>	Stay current with automatic version upgrades that maintain compatibility while enhancing security.
<b>Seamless Animations</b>	Add fluid transitions and interactions without extra coding—all optimized for mobile performance.
<b>Enhanced Loading States</b>	Improve perceived performance with built-in skeletal loaders during data fetches.
<b>Expo Integration</b>	Access native APIs and custom plugins through out-of-the-box Expo support, accelerating deployment.
<b>Design System Support</b>	Maintain brand consistency with reusable design tokens and components across all your applications.

## WEB DEVELOPERS CAN CONFIDENTLY SHIP MOBILE EXPERIENCES

- Drag-and-Drop UI** Quickly assemble application screens using a visual interface, eliminating effort on manual layouts.
- Customizable UI Library** Access a rich set of mobile-optimized UI components that are fully customizable for your unique needs.
- JavaScript-Friendly** If you know JavaScript, you're ready to build with WaveMaker. No need to learn new languages or frameworks.
- Instant Previews** Test your app on a real device instantly. Just scan the QR code—no installers or complicated setup needed.
- Smooth Deployment** Use App Chef to quickly generate installable APK and IPA files for deployment without leaving the platform.

## RESOURCES

[List of Features](#)[Watch Video](#)

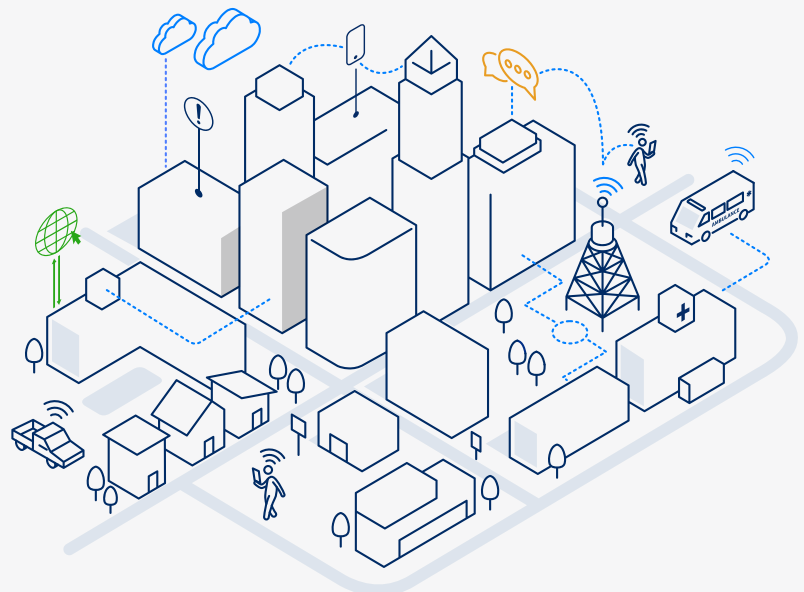
# ALL YOU NEED TO BUILD 5G POWERED APPS



WaveXD provides ready-to-use prefab components that simplify use of 5G-driven features in a variety of applications - from financial fraud prevention to asset monitoring to on-demand quality-of-service boost. Building 5G network API-powered applications is made easy with pre-wired components, journeys, apps and themes that you can embed, compose, customize, and extend.

## FEATURES

- Lego®-like usability with consumer-grade styling for web and mobile.
- Pre-wired with 5G APIs from Nokia and other leading providers.
- Optimized for directly embedding in your application.
- Out-of-the-box REST API integrations like error-checking, masking and styling.
- Under-the-hood high performance Angular and React Native code.





## THE WAVEXD ADVANTAGE

### Consumer Grade User Interface

Classy UX that's fully customizable, has enterprise-class security, error-handling, masking and scalability.

### Code & Ops Freedom

Deploy to your infrastructure, get industry-grade Angular, React Native, JavaScript and Java/Spring code.

### Intuitive Dev Studio

Leverage WaveMaker Studio to customize or extend components, and visually compose apps that you can deploy & preview in a single click.

### Take Components Anywhere

Generate web components from prefabs that you want to embed in other or third party applications.

## RESOURCES

The Rise of Network Intelligent App Development



[Go to Marketplace](#)

[Download PDF](#)

[Watch Video](#)



# PREFABS - ACCELERATE APP DEVELOPMENT WITH COMPOSABILITY

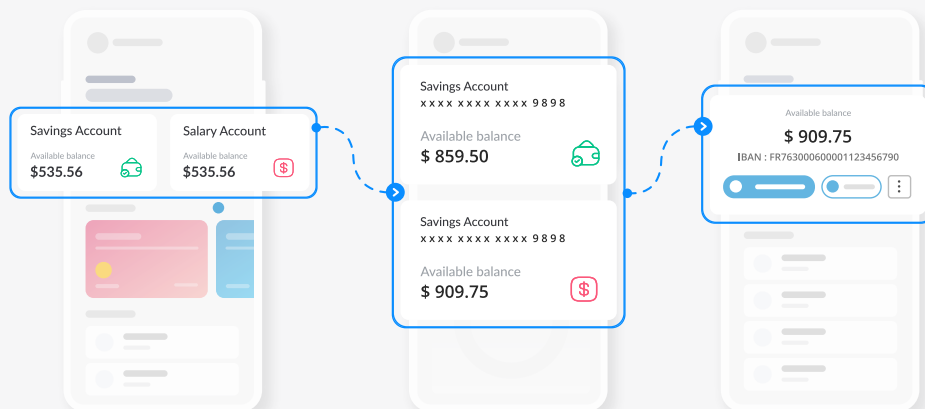
## COMPONENTIZE ANY USE CASE, SIMPLE OR COMPLEX

Wrap backend services, REST APIs, and stunning UI together to create custom experience components that can be customized, distributed, versioned, and independently tested.



## BUILD YOUR OWN BRAND-CONSISTENT COMPONENT REPOSITORY

Build your own private and secure component repository with prefabs and user journeys built on WaveMaker. Enable developers and citizen developers to pick, customize, and retrofit components to compose new applications and experiences rapidly. Ensure consistency of style, zero duplication of effort, and faster delivery of experiences across large and cross-functional development teams.



## RESOURCES

[Read Blog](#)

# WAVEMAKER'S CAPABILITIES ACROSS THE APPLICATION LIFECYCLE



## Design

### Full-Stack Low Code Studio

Visual development environment with rich widget libraries.

### AutoCode-Powered Development

AI/ML-powered design-to-code automation.

## Development

### Composable Approach

Prefabs (pre-built components) enable rapid UI assembly.

### Seamless API Integration

Import and orchestrate REST, WebSocket APIs.

### Java Services to API & Database

Backend logic made easy.

### Custom Code Support

Java, JavaScript, HTML, and CSS.

### Theme Builder

Design and style UIs with reusable templates.

## Testing & Deployment

### Built-in CI/CD

One-click deployment to on-premises, public, or private clouds.

### Automated Testing

Integration with JUnit, Selenium, and Ghost Inspector.

### Observability Tools

Real-time logging, monitoring, and analytics.

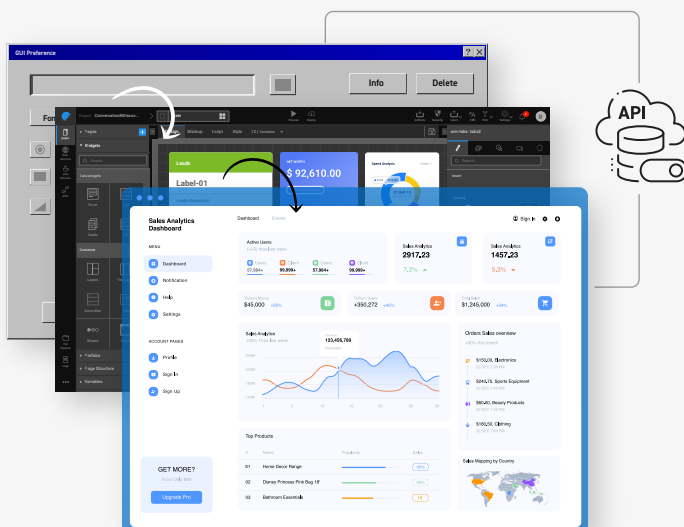
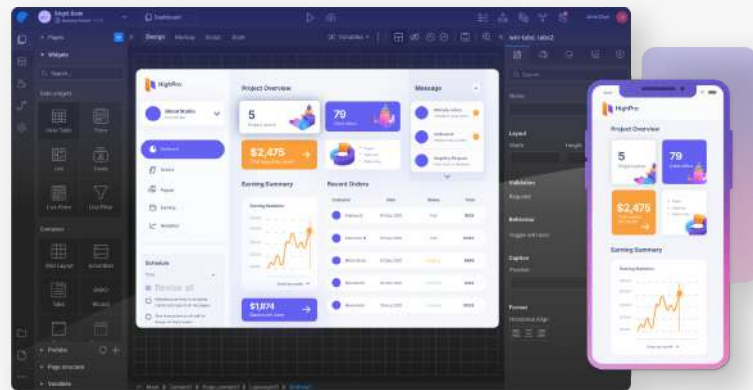
### Microservices & Containerization

12-factor deployment principles for scalability.

# WAVEMAKER USE CASES

## Enterprise App Development

- Rapid development of consumer-grade web and mobile applications.
- API-first architecture for extensibility and digital transformation.
- Multi-platform applications with unified codebases.



## Legacy Modernization

- Incremental modernization of legacy apps while preserving business logic.
- UI stack upgrades, microservices adoption, and cloud migration. Custom workflows for digital engagement and automation.

## Composable Platform & White-Labeling

- Embed applications in partner ecosystems with open API consumption.
- Self-service app composition for enterprises and independent software vendors (ISVs).
- Custom UI libraries and white-labeled platforms for B2B offerings.



# INDUSTRIES & SOLUTIONS

- **Banking & Financial Services**  
Digital banking, wealth management, embedded banking.
- **Insurance**  
Quote aggregation, self-service portals.
- **Healthcare**  
Hospital and lab management solutions.
- **Manufacturing & Retail**  
B2B collaboration platforms, procurement management.
- **Government & Public Sector**  
Citizen services, operations management.

# CUSTOMER SUCCESS STORIES

- **Corporate Banking Modernization**  
Enhanced transaction security and approvals via mobile banking.
- **Fintech Digital Transformation**  
Componentized, API-driven banking experiences.
- **Retirement Benefits Solution**  
Web and mobile platforms for portfolio management.

---

## RESOURCES

[Case Studies](#)

[Technical Specs](#)



[info@wavemaker.com](mailto:info@wavemaker.com)

[wavemaker.com](http://wavemaker.com)

